

Analysis on Pitch Movement of Sentences with Topic Markers in Sundanese

FURIHATA Masashi

(Institute of Global Studies, Tokyo University of Foreign Studies)

furihata@tufs.ac.jp

The aim of this study is to analyze the acoustic features of intonation of sentences containing topic markers in Sundanese.

Sundanese has two topic markers, i.e., *teh* and *mah* (Furihata 2015). Among them, *mah* shows a clear contrast. According to Coolsma (1904), strong stress is put on the word, phrase or sentence with *mah*, and *mah* shows a contrast because of the stress. Some works referred to intonation of Sundanese, such as Robins (1953), Syoc(1959) and Sudaryat et al. (2007). However, there is a general explanation on the intonation pattern, and none of them made any clear statements on intonation in relation to the topic markers.

I have investigated the pitch patterns of some Sundanese sentences containing the topic markers using a software for acoustic analysis. The F0 frequency at several points of the phrases in each sentence was measured, and the obtained data were plotted in sequential line graphs (See Figure 1 and 2 as examples). Then, the graphs as the representation of pitch movement were observed. Some tendencies found in the investigation are as follows:

- 1) The pitch pattern of the phrases with the particle *mah* shows a great rise before the particle, whereas that of the phrases with the particle *teh* shows a rise at the particle.
- 2) The pitch movement of the sentences with *mah* shows a broader range than that of the sentences with *teh*.
- 3) In some cases, clear difference of the accentuated part in the sentences was found between the use of *teh* and *mah*.

However, the tendency of the pitch movement also differed among the speakers.

The difference of the pitch movement between the sentences with the two topic markers may be related to the clear contrastiveness shown by the particle *mah*.

[References]

- Coolsma, S. 1904. *Soendaneesche Spraakkunst*. Leiden: A.W. Sijthoff.
- Furihata, M. 2015. "Particles *teh* and *mah* as Topic Markers in Sundanese", *The Fifth International Symposium On The Languages Of Java (Isloj5)*. Universitas Pendidikan Indonesia, Bandung, West Java, Indonesia. 6-7 June 2015.
- Robins, R.H. 1953. "Formal Division in Sundanese," *Transactions of the Philological Society*. 109-142.
- Sudaryat, Y., et.al. 2007. *Tata Basa Sunda Kiwari*. Bandung: Yrama Widya.
- Syoc, W.B.v. 1959. *The Phonology and Morphology of the Sundanese Language*. Doctoral Dissertation, University of Michigan.

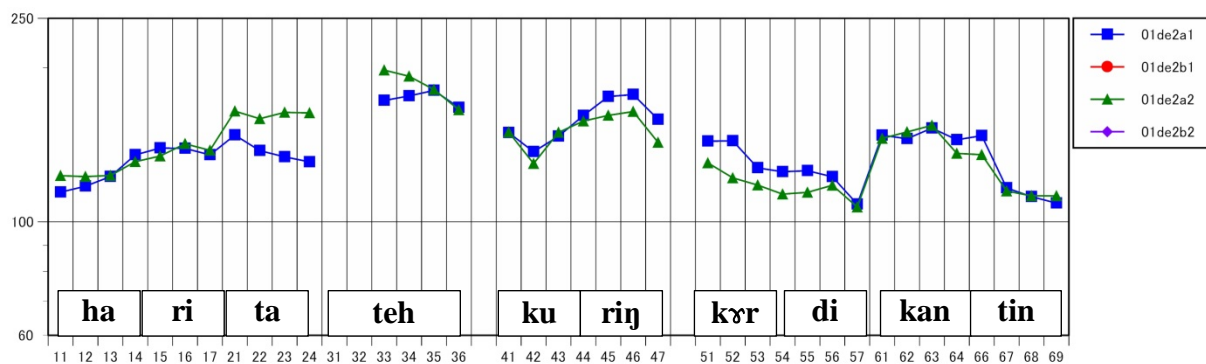


Figure 1. Pitch movement of *Harita teh kuring keur di kantin*

(At that time, I was at the canteen).

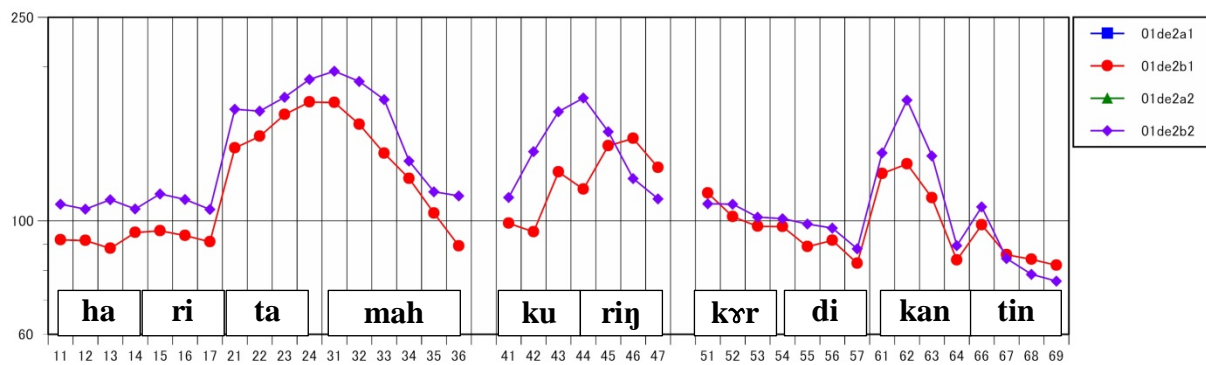


Figure 2. Pitch movement of *Harita mah kuring keur di kantin*

(At that time, I was at the canteen).